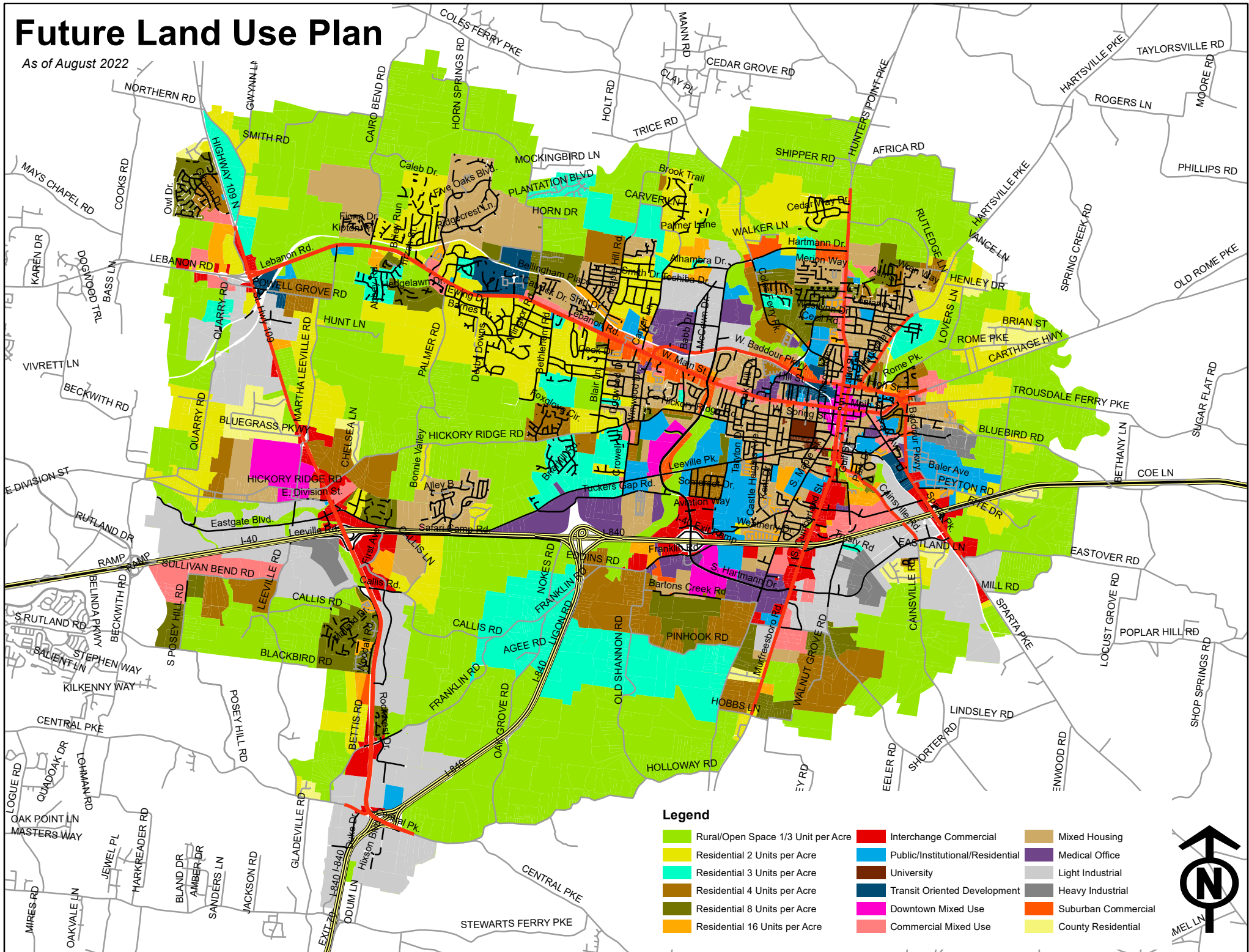


Future Land Use Plan

As of August 2022



Legend

- | | | |
|---|---|--|
| ■ Rural/Open Space 1/3 Unit per Acre | ■ Interchange Commercial | ■ Mixed Housing |
| ■ Residential 2 Units per Acre | ■ Public/Institutional/Residential | ■ Medical Office |
| ■ Residential 3 Units per Acre | ■ University | ■ Light Industrial |
| ■ Residential 4 Units per Acre | ■ Transit Oriented Development | ■ Heavy Industrial |
| ■ Residential 8 Units per Acre | ■ Downtown Mixed Use | ■ Suburban Commercial |
| ■ Residential 16 Units per Acre | ■ Commercial Mixed Use | ■ County Residential |

