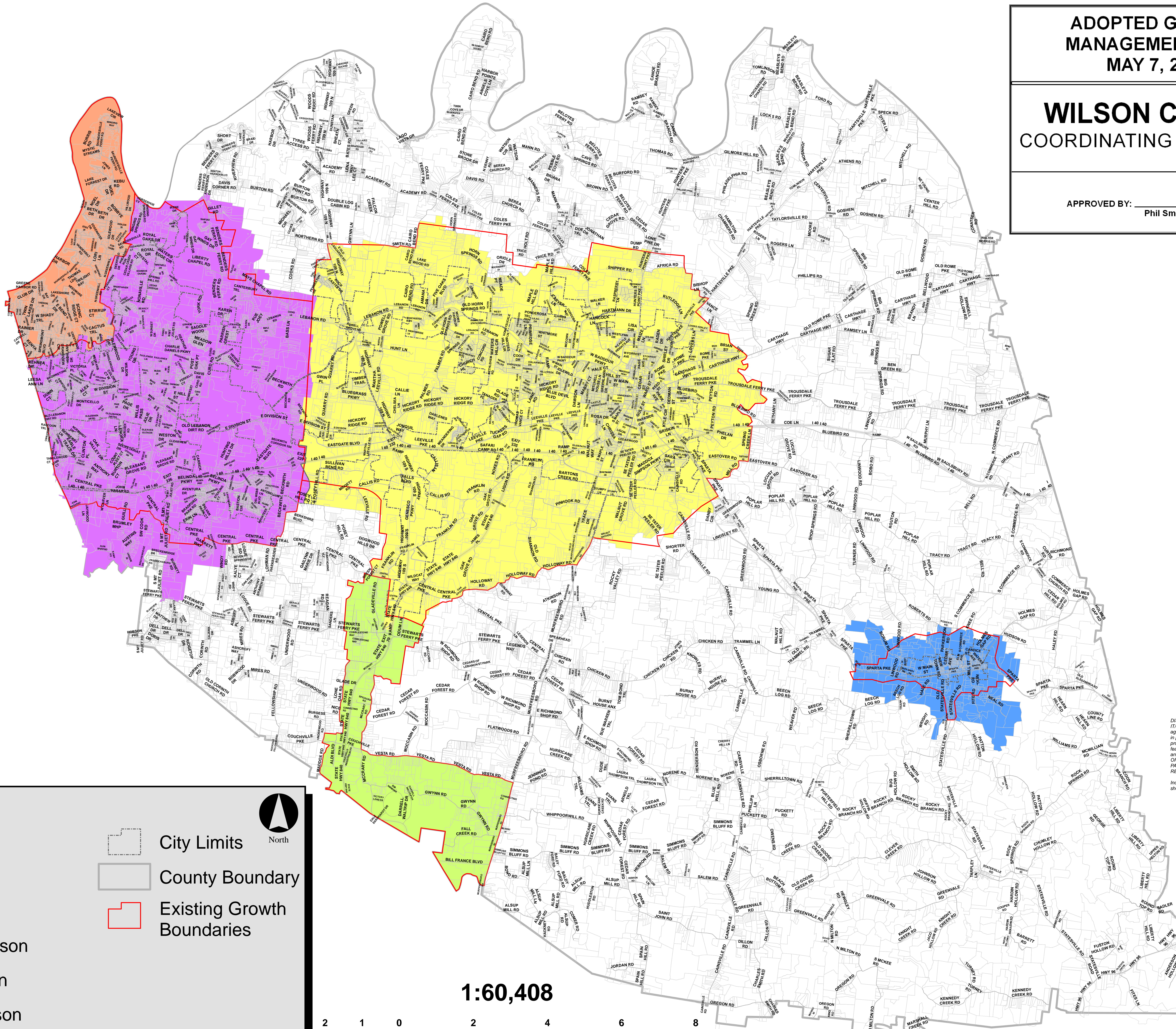


ADOPTED GROWTH  
MANAGEMENT PLAN  
MAY 7, 2012

**WILSON COUNTY**  
COORDINATING COMMITTEE

APPROVED BY: Phil Smartt, Chairman



**LEGEND**

**Growth Areas**

- Lebanon
- Mt. Juliet
- South Wilson
- Watertown
- West Wilson

City Limits

County Boundary

Existing Growth Boundaries

North

1:60,408



DISCLAIMER: This map was created by the City of Mt. Juliet IT/GIS Department. The City of Mt. Juliet, its employees, agents and personnel, make no warranty to its accuracy, and in particular its accuracy as to labeling, dimensions, contours, property boundaries or placement or location of any map features thereon. The City of Mt. Juliet, its employees, agents and personnel MAKE NO WARRANTY OF MERCHANTABILITY OR WARRANTY FOR FITNESS OF USE FOR A PARTICULAR PURPOSE EXPRESSED OR IMPLIED WITH RESPECT TO THIS MAP PRODUCT.

Independent verification of all data contained on this map product should be obtained by any user of this map.