



# Community Forum

Spring 2008

Volume 1, Issue 1

## Points of Contact

- Animal Control  
444-0825
- Building Construction/Inspection  
444-3647
- Planning & Development  
444-3647
- Property Maintenance—Litter, Junk Vehicles, etc.  
443-2850
- Mayor's Office  
444-2839

## Inside this issue:

Tree City USA	2
Interactive Mapping	2
FAQ	2
Growth and Statistics	3
Safe Routes to School	3
Hartmann Drive Status	3
Upcoming Meetings	4

## Debut of Newsletter related to Growth & Development

The Planning Department is taking the initiative to provide information, not only development-related, but also items of interest to the citizens of Lebanon. There are many things going on behind the scenes and we believe this newsletter is a great way to convey information. This newsletter will primarily be distributed via e-mail, however, paper copies will be available for distribution or may be picked-up at City Hall. A couple of the topics you will be hearing about in this and upcoming issues include:

- Interactive Mapping coming to our website
- Adoption of the updated Land Use Plan
- Adoption of the updated Major Thoroughfare Plan
- Status of the Zoning Ordinance review and update
- Status of Hartmann Drive
- Status of Highway 109 widening
- Status of the latest trail extension
- Application submitted for the Safe Routes to School grant
- Clock tower project on the Square
- Farmers Market grant application and improvements
- Other development and planning-related activities.

## Blueprint for America, Next Steps...

Last year, Lebanon was chosen as a pilot community by the AIA (American Institute of Architects) and Cumberland Region Tomorrow for a "Blueprint for America -- Visioning Workshop". Over 100 people attended the workshop. An advisory

committee is being formed to build on this first step leading to a comprehensive growth strategy for core areas of Lebanon. The intention is to develop recommendations for the continued growth of our city. This

could include things such as additional parkland or changes to our regulations to facilitate redevelopment.

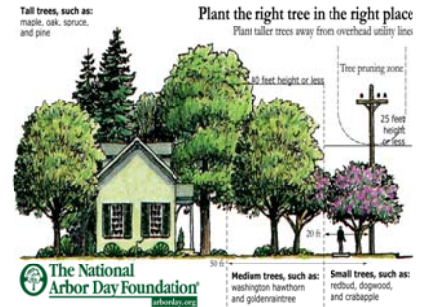
The Final Report will soon be available on the city's website.

### City working to become a Tree City USA

The Planning Department, in collaboration with other departments, organizations and City Council, is currently drafting a Tree City USA Ordinance to address public trees on public lands and rights-of-way. There are four key components of the program which is sponsored by the Arbor Day Foundation. The first component is that a Tree Board shall be established. This board would act as an advisory group in

maintaining the health of the City's trees. The second requirement is to adopt an ordinance that will soon be considered by our City Council. The third prerequisite is a \$2.00 dollar per capita annual budget. In-kind cost that the City of Lebanon currently spends on tree trimming cost can be included in the budget. The final requirement is an Arbor Day observation and proclamation. The City is in the process of final-

izing the Tree Ordinance and already participates with a proclamation and observation of Arbor Day. One of the most important aspects of the proposed ordinance is a requirement that no trees be topped on public property. An extension of that requirement is that any tree cutting on public property must follow proper tree trimming practices outlined by the nationally recognized ANSI Standards for tree pruning.



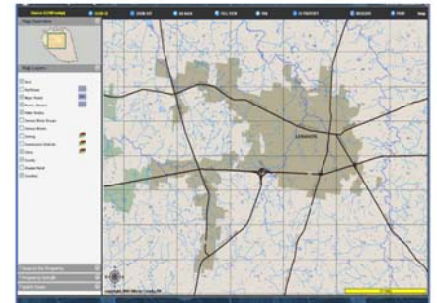
### Interactive Mapping soon to be available on the City's Website

The City of Lebanon's GIS Department is anticipating the on-line service for interactive mapping for the city. When this website is activated city employees as well as the general public will have access to geographical information of the city. This will include the geometry and the information pertaining to

the geometry for data such as, parcel geometry with owner and address information, or zoning district line overlaid on the parcel lines, the result is finding zoning districts per parcel. Other information available will include FEMA data, city street information, contours, and aerial photography.

The development of the website is ready for in-house review and is scheduled for on-line service by mid March. This will be an added service for the citizens of Lebanon, and a great source of viewing and querying data for each city department.

**Interactive Mapping for the City of Lebanon available by mid-March 2008.**

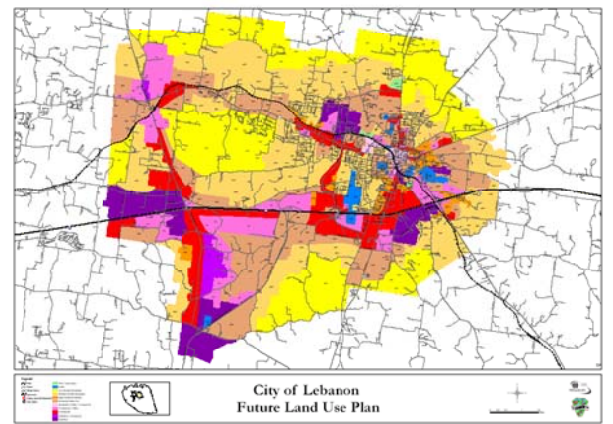


### FAQ

**What is a Land Use Plan?** - A long-range plan for the growth and development of an area. The plan is used as guide in making decisions regarding zoning and meeting the needs of the developing community.

**What is a Major Thoroughfare Plan?** - A long-range plan related to the transportation-related decision-making process with a goal being to offer a safe and connective transportation system the will meet the present and future trans-

portation related needs of the community.



## Growth and Statistics

The Planning Department keeps track of various statistics related to development. The information provides a snapshot of what is going on in Lebanon in terms of residential and non-residential growth.

The US Census Bureau estimated our population in 2006 as being 23,702. An increase of 8% since the Special Census con-

ducted in 2004.

In 2007:

- 256+ acres were annexed by the City, all at the request of the property owner or developer
- More than 2.4 million sq. ft. of building area was approved, including 3 warehouse buildings totaling almost 1.5 million sq. ft., more than 67,500 sq. ft. of

office and 2 developments at UMC

- 800+ lots were approved on Preliminary Plats
- 900+ lots were approved on Final Plats, the first year since 2005 that the number of lots in Final Plats exceeded the number of lots on Preliminary Plats

## Safe Routes to School for LSSD

The City of Lebanon Planning Department, in cooperation with the Lebanon Special School District, is submitting a proposal for the Tennessee Department of Transportation's Safe Routes to School Program. Safe Routes to School is a nationwide initiative focused on promoting walking and biking as

viable modes of transportation for elementary students (K-8th Grade). Safe Routes to School proposals must address the 5 Es (Engineering, Education, Enforcement, Encouragement and Evaluation) in order to be considered.

The coordinating committee for this year's pro-

posal determined early on that crosswalk improvements at two very busy N. Cumberland intersections will be our focus for this year.

If you have further questions about Safe Routes to School, feel free to contact Will Hager at 444-3646 ext 252 or [hagerw@lebanontn.org](mailto:hagerw@lebanontn.org).

*"...crosswalk improvements at two very busy N. Cumberland intersections will be our focus for this year."*

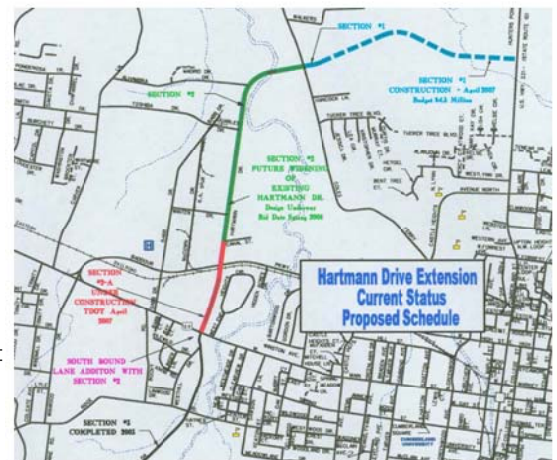


## Hartmann Drive Status

Section 1 (in blue) :  
Under construction  
Estimated completion—Summer 2008  
3 lanes, expandable to 5 lanes  
\$4.5 million project (all city funded)

Section 2 (in green) :  
Being designed  
Expected to bid Spring 2008  
3 lanes, expandable to 5 lanes  
\$6 million project (all city funded)

Section 2A (in red) :  
Under construction  
Estimated completion Fall 2008  
5 lanes road  
TDOT/city project (\$841,000 city funds)

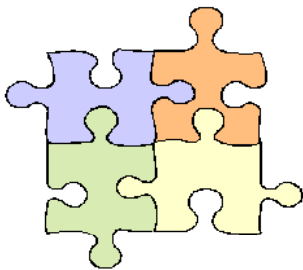


## City of Lebanon

City Hall  
200 North Castle Heights Ave.  
Lebanon, TN 37087  
www.lebanontn.org  
Phone: 615-444-3647  
Fax: 615-443-2899



*The City of Lebanon  
Planning Department  
is committed to  
providing service and  
information to help  
our community grow  
and prosper in an  
organized manner.*



---

---

### Upcoming Meetings

**City Council** regularly meets the 1st and 3rd Tuesdays in the Town Meeting Hall of City Hall. Work sessions normally begin at 5:00 pm Public hearings begin at 5:55 pm and the actual Council meeting begins at 6:00 pm.

**Planning Commission** regularly meets the 4th Tuesday in the Town Meeting Hall of City Hall. The meetings begin at 5:00 pm. A preliminary meeting begins at 11:00 am on the 3rd Tuesday. No presentations are made by the public, nor

any decisions made on actual items at the preliminary meeting. Both meetings are held in the Town Meeting Hall at City Hall.

**Board of Zoning Appeals** regularly meets the 4th Monday in the Town Meeting Hall of City Hall. The meetings begin at 5:00 pm.

**The Public Works and Transportation Committee** regularly meets the 4th Monday in the Town Meeting Hall of City Hall. The meetings begin at 7:30 am.