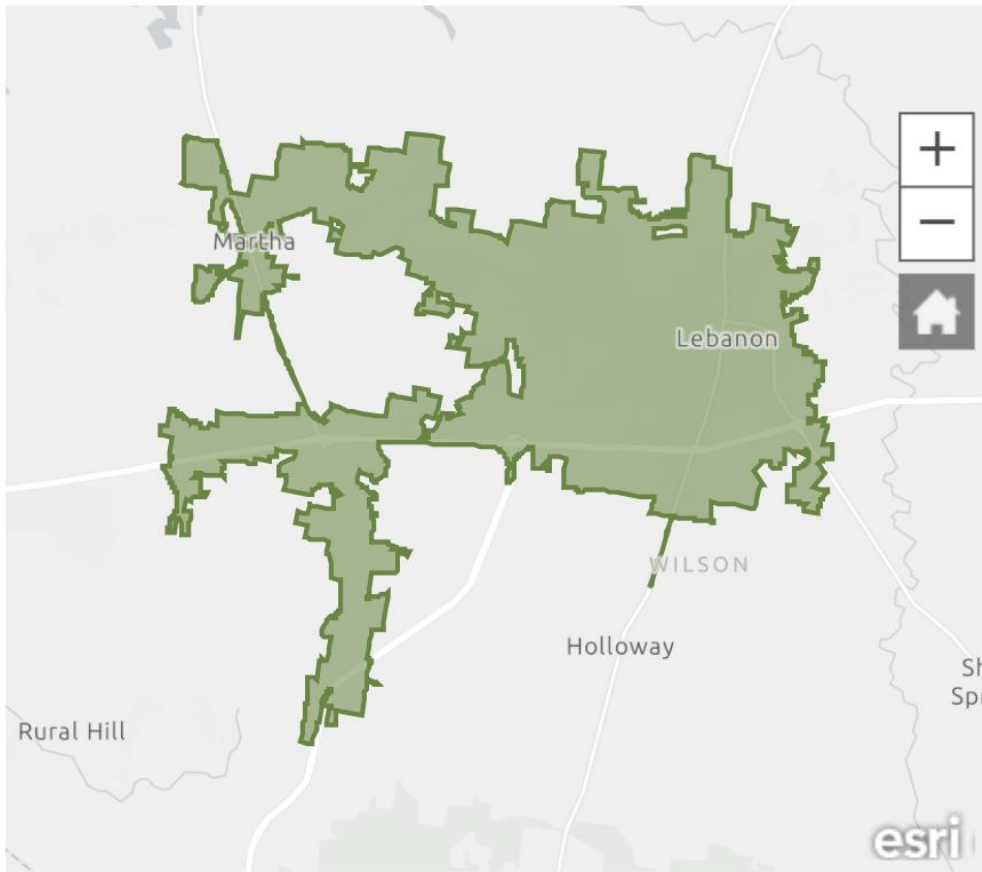


POPULATION TRENDS AND KEY INDICATORS

Lebanon City, TN



38,039	14,405	2.55	39.5	\$57,405	\$229,973	89	151	46
Population	Households	Avg Size Household	Median Age	Median Household Income	Median Home Value	Wealth Index	Housing Affordability	Diversity Index

MORTGAGE INDICATORS



\$8,989

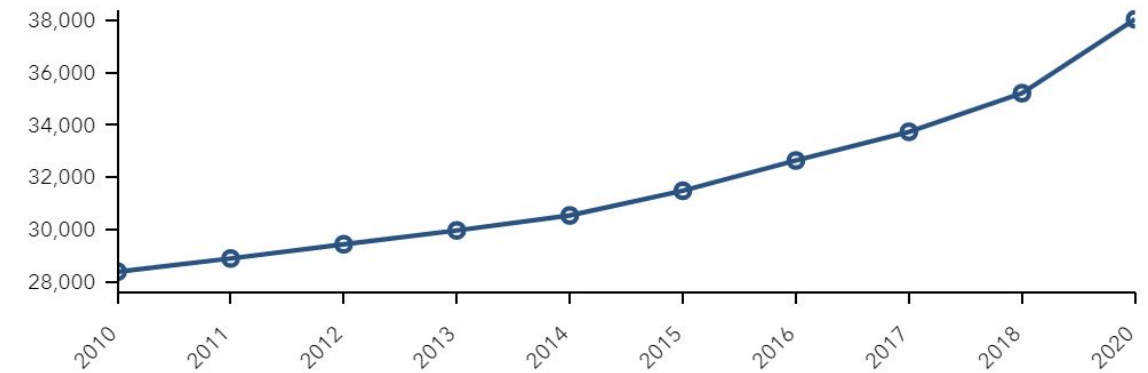
Avg Spent on Mortgage & Basics



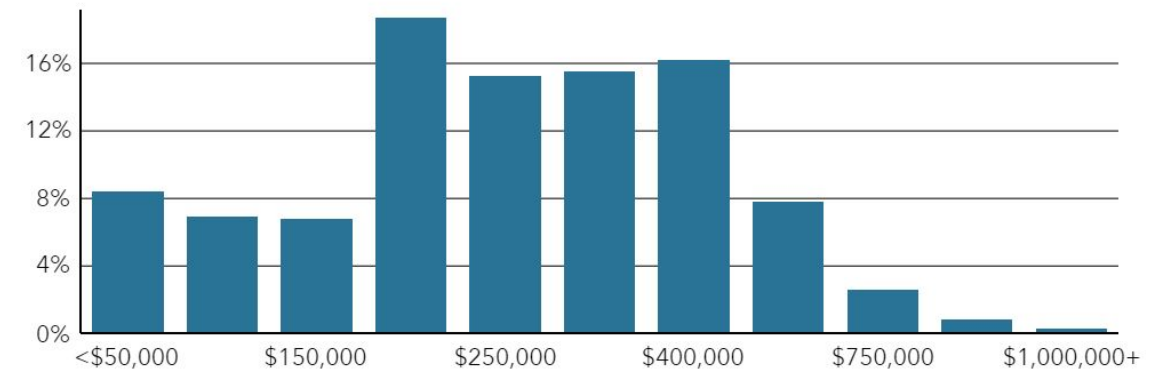
16.7%

Percent of Income for Mortgage

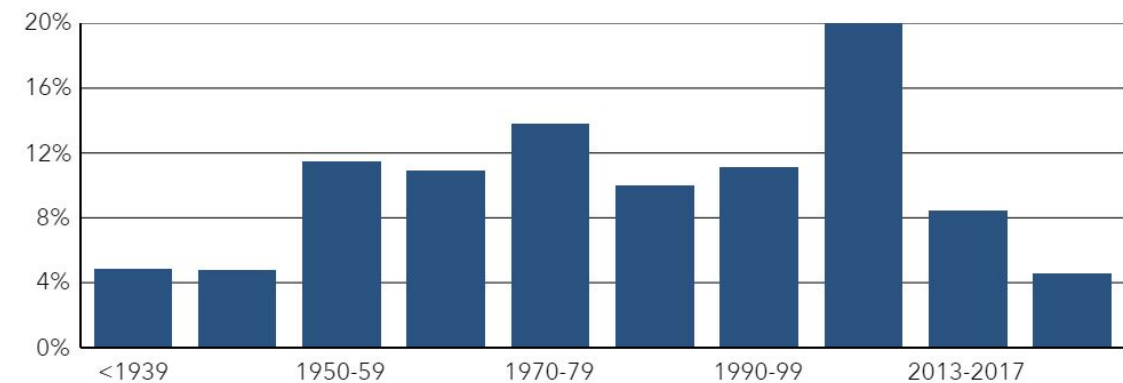
Historical Trends: Population



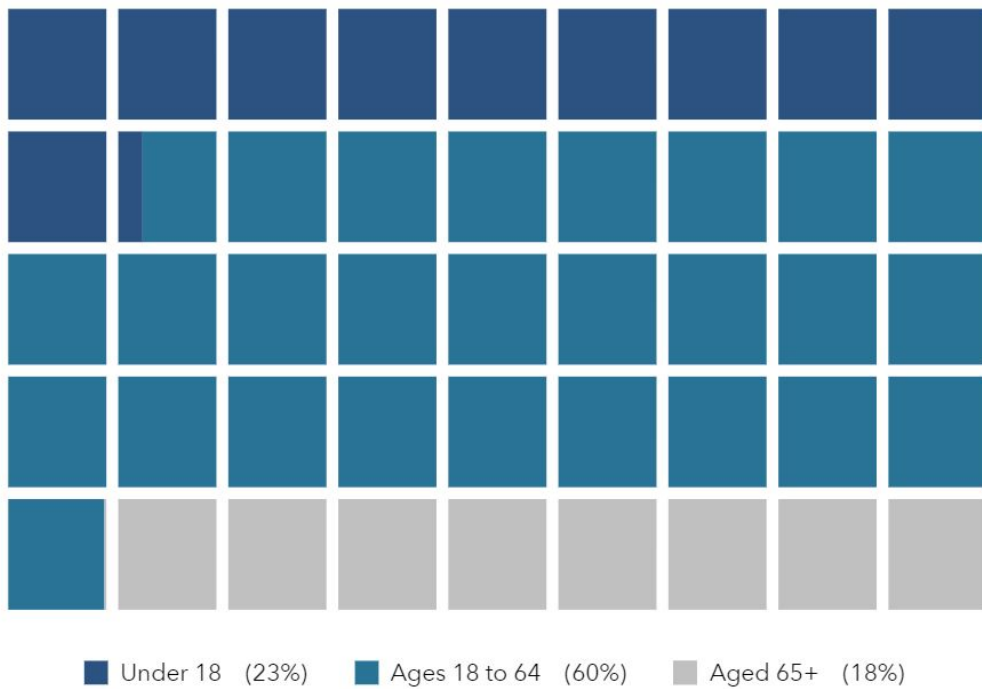
Home Value



Housing: Year Built



POPULATION BY AGE



POPULATION BY GENERATION

